

Let's meet on IPTV! v2

To make video-conference with IPTV, do the following:

Start with a PC computer, running Windows, with Internet connection, and a video camera and headphone.

An inexpensive way to connect a video camera to the PC is to choose models with USB connection, known as “webcam”, like shown in figure 1.



Figure 1: Examples of webcam

Your PC should have speakers for sound output and microphone for sound input. Most PC's have output sound connector (usually green) and input connector (usually red). A practical and inexpensive way to handle the sound is to use a headset, such as the one shown in figure 2.



Figure 2: Example of headphone, with integrated microphone

The PC should have Internet connection. The physical way this connection is done makes no difference for IPTV. It can be by cable, by radio, by satellite, by ADSL modem or any other technology. It can be easily checked whether the computer is connected or not to the Internet by running a web browser such as Firefox or Internet Explorer, and point to any web page such as www.google.com.

An important detail about the internet connection is its bandwidth, that is, the amount of bits per second in the connection. The smallest bandwidth for a decent experience with IPTV is of about 256K; however, it is technically possible to use IPTV with bandwidth as low as 33K.

If your computer has firewall, it will be necessary to authorize the IPTV program to access the Internet.



Figure 3: security panel of Windows, indicating that the inner firewall is active

Download the IPTV program from the site <http://www.ip.tv/download/>. Install IPTV to your computer. If your Windows is well up-to-date, the compact install is enough for you; otherwise choose the full install. You can also see the IPTV Guide with extra tips about installation.

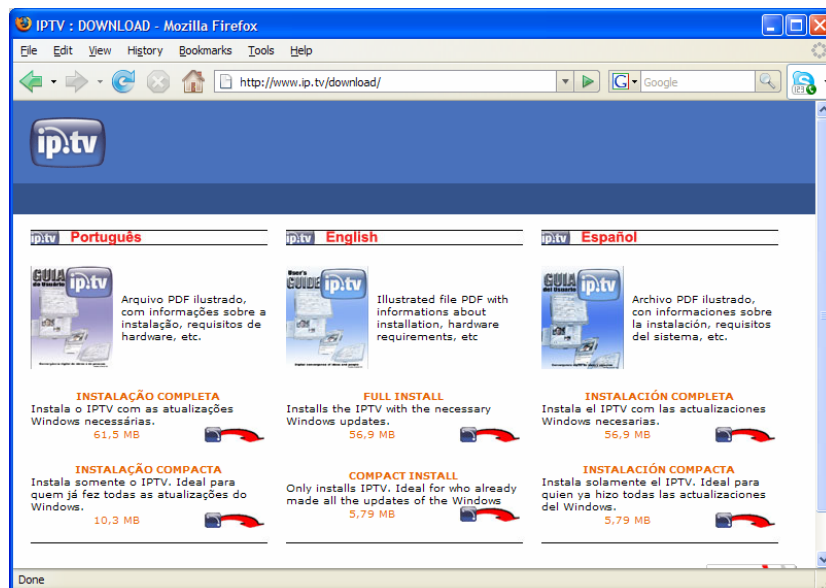


Figure 4: IPTV download web page

Execute the IPTV program. You should see a screen like shown in figure 5. Click as indicated to open the options panel.



Figure 5: IPTV's first screen, indicating where to click to open the options panel

In the options panel, click in "configuration", as shown in figure 6. In field "Server" (emphasized) type "alpha.ip.tv"; there's no password for this server. In field "User" (above field "Server"), type "tiguest", password "sbvb123". If you want, click the checkbox "Remember Passwords". Lastly, click button "on/off" (bottom, left, emphasized).



Figure 6: IPTV's configuration screen

IPTV should then exhibit the user logged screen, as shown in figure 7. The main screen's element is a list control showing the public channels and the number of users logged at the moment. This is a time-varying information, for users can login and logout at any time.

Channels where no user is logged aren't listed in the list control. To update the list control's information, click on "channels list" (below the list control. Look for "tecinfo" and click on it, or type "tecinfo" in field "Channel Name", as shown in figure 7.

Notice that the button "on/off" is now green, indicating that IPTV is logged. Clicking on this button makes IPTV to go off.

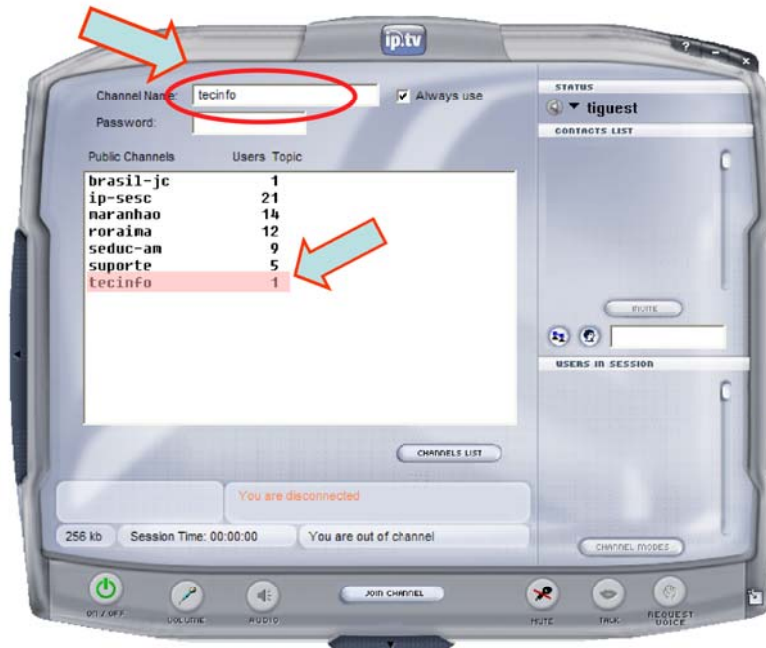


Figure 7: IPTV is on, user is logged, but still out of any channel.

Now you are on IPTV, on channel "tecinfo". All features of IPTV can be used. In figure 8 you can see IPTV in video-conference mode.



Figure 8: IPTV's video conference screen

Please, follow these instructions, and lets meet in IPTV. Don't forget that scheduling the meeting is needed.

PS: if it is not possible to connect with user "tigest", try "tigest2" or "tigest3".

Sergio Barbosa Villas-Boas (sbVB)

www.sbVB.com.br

sbvb@sbvb.com.br